



XConsole Ethernet Communication Manual September 2010.

XConsole is compatible with Microsoft XP, Vista and Windows 7.

The software will also work if using Boot camp on a Mac.

ETHERNET CONFIGURATION:

We can now configure the Ethernet connection.
Restart XConsole and again connect via the computers USB port.

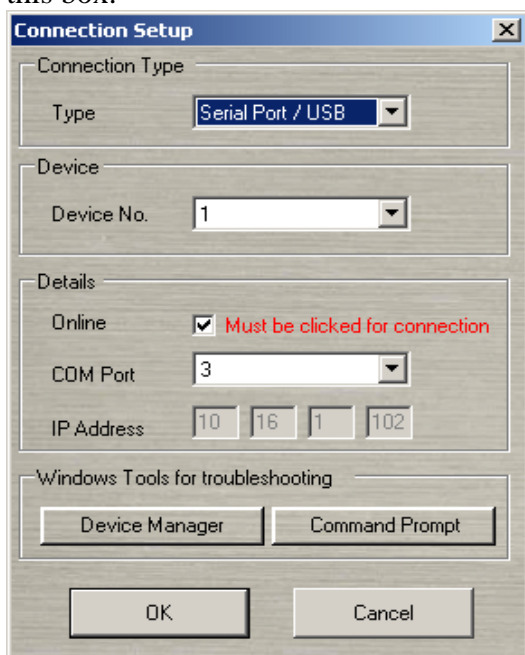
Three of the PC's parameters need to be determined to connect successfully to the unit

- IP address
- Gateway
- Subnet mask

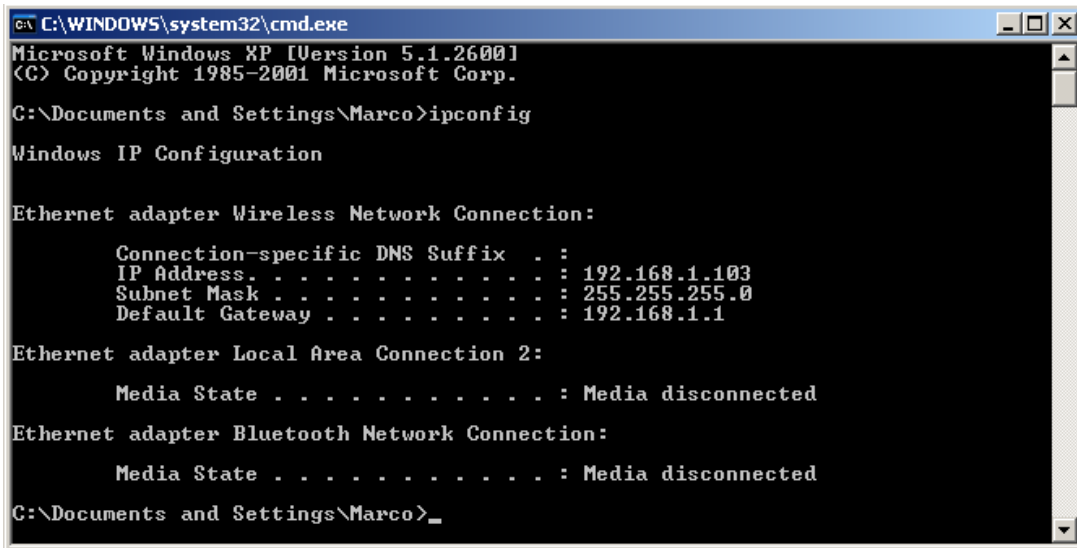
Determine these parameters by selecting "Start" and then "XConsole" from the main menu.



In XConsole go to "Setup" then "Port Connection". And click on "Command Prompt" in this box.



A DOS prompt window will appear.
 Type “ipconfig” when ready and press enter.
 This will bring up all the information required to setup the Ethernet connection.



Return to the main page of the XConsole and click “Device 1 (online)”.
 The main window for that specific device will appear.

In the bottom left corner of this window, click on the “Device” button that is found next to “Presets”.



This initializes the configuration menu of the network card found in the rear of the Xilica unit.

Within this dialogue menu, enter the information received from the previous DOS prompt instruction into the respective boxes.

- IP address
- Gateway
- Subnet mask

Please ensure that you enter the information in to the fields correctly and in the right order.



WARNING:

To avoid IP conflicts between PC and device, the last field of the “Device Address” must be a unique number between the 1 and 254.

Every computer, Xilica device and all other network devices should have their own number with no duplication of addresses anywhere on the network.

Please make note of the unit’s unique IP address that has been allocated to the Xilica, as it is needed for further configuration within XConsole.

Save the setting by clicking “OK”.

Return to XConsole, click “Setup” and then click on “Port Connection”.

The window “Connection Setup” will appear.

This is the same window used to configure the USB connection earlier in the set up procedure.



In the drop down box next to “Type”, select “CAT-5 Ethernet” from the available options.

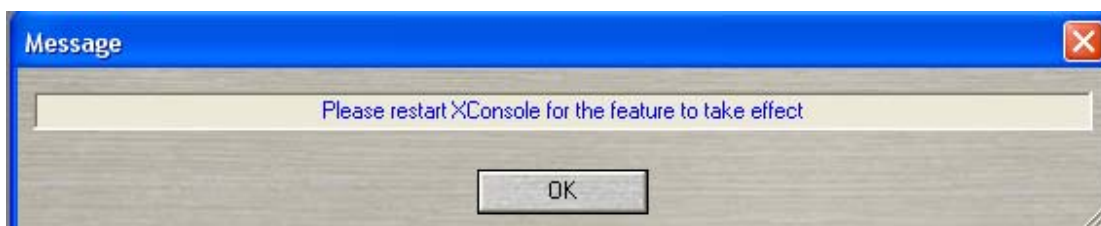
You should notice that it now becomes impossible to change the “COM Port” selection.

Instead, the option to fill in the IP address configured in the prior setup previously becomes available.

This is necessary as previously, the configuration steps simply allocated an IP address to the device’s network card using the USB connection.

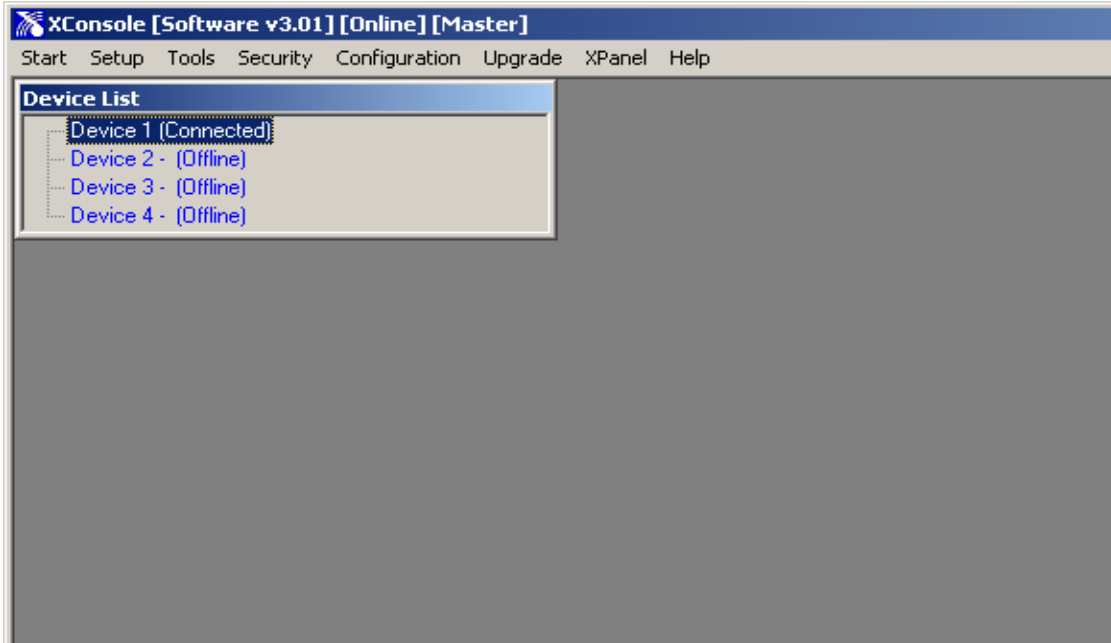
After copying the IP address entered earlier in the “Device Setup” window, please confirm the changes by clicking “OK”.

You will now be prompted to restart XConsole before the changes take effect. Confirm this instruction by clicking OK, and then quit XConsole.



Before restarting XConsole, please disconnect the USB cable between PC and device and connect the Xilica to your (wireless) Router with a straight CAT-5 Ethernet cable.

Please restart XConsole and make a connection to the device over Ethernet in the same manner as connecting via USB.



You should now see that “Device 1” is again online, but is communicating with the PC over a solid Ethernet connection.

If you have XConsole installed on a notebook with WIFI capabilities, it is possible to connect the Xilica to a wireless router and connect without providing a hard-wired connection.

WARNING: It is not possible to do Firmware updates over the Ethernet connection, only via Serial Port or USB.